



Australian Government



NEW COLOMBO PLAN

Connect to Australia's future - study in the region

# Languages in NSW Secondary Schools

Liam Prince  
March 2026





# Number of HSC enrolments in languages, by language, New South Wales, 1991-2025



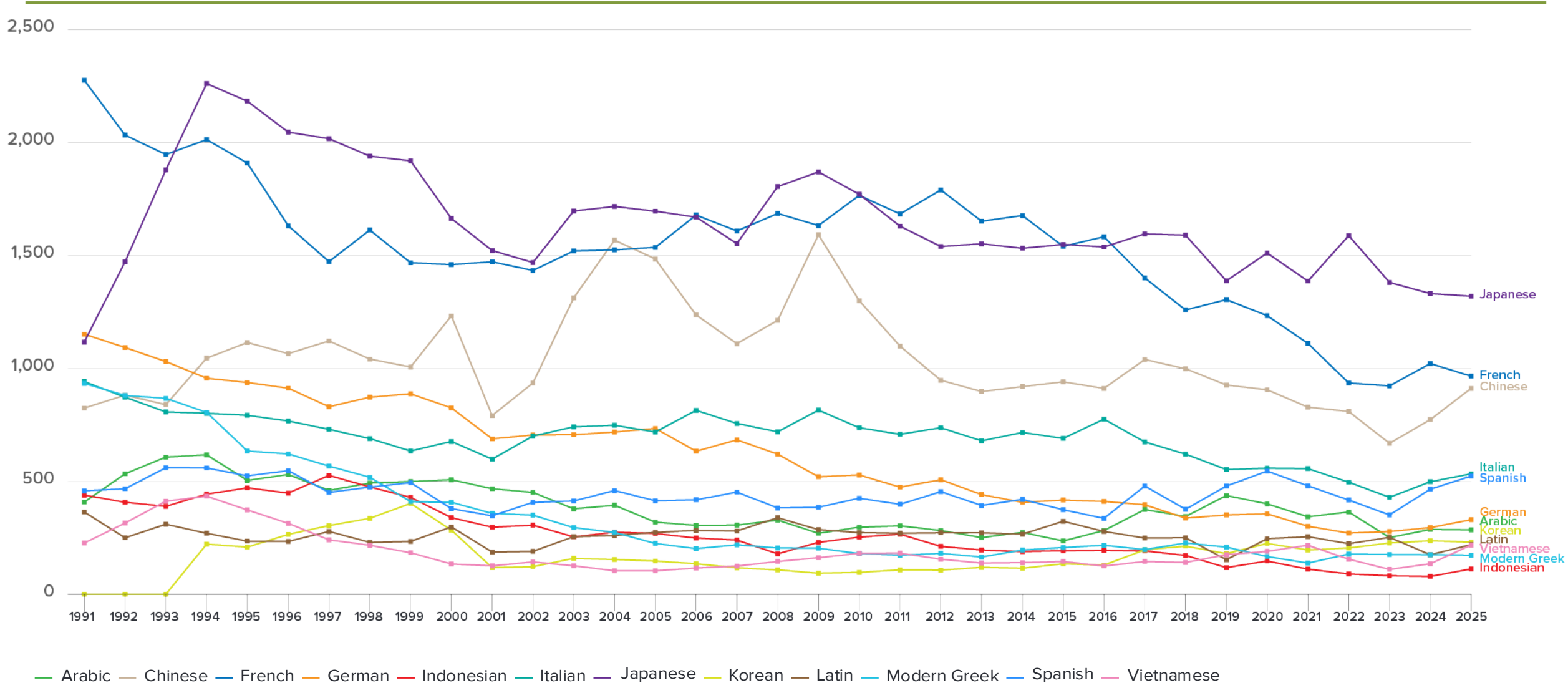
LANGUAGE	1991	1992	1993	1994	1995	1996	1997	1998	1999	2000	2001	2002	2003	2004	2005	2006	2007	2008	2009	2010	2011	2012	2013	2014	2015	2016	2017	2018	2019	2020	2021	2022	2023	2024	2025	2024-2025 (+/-)	
Arabic	408	533	607	617	504	530	460	492	499	507	467	451	378	394	319	305	306	328	270	297	303	282	251	274	236	282	375	344	437	400	343	364	251	287	285	-2	-0.7%
Chinese	824	881	839	1,045	1,114	1,065	1,121	1,041	1,006	1,232	791	935	1,312	1,567	1,484	1,236	1,109	1,212	1,591	1,299	1,098	947	897	919	940	911	1,039	998	926	905	828	809	668	773	911	138	17.9%
French	2,275	2,032	1,946	2,012	1,908	1,631	1,472	1,612	1,467	1,459	1,471	1,433	1,519	1,524	1,535	1,678	1,608	1,685	1,632	1,765	1,683	1,789	1,651	1,676	1,540	1,582	1,400	1,258	1,304	1,233	1,110	935	922	1,021	965	-56	-5.5%
German	1,151	1,092	1,030	956	937	912	830	872	887	825	688	705	706	718	734	633	683	620	520	528	474	507	441	407	417	411	396	337	351	356	301	271	278	295	330	35	11.9%
Indonesian	439	407	389	443	471	448	526	475	429	339	297	306	254	275	269	249	240	179	230	253	266	212	196	189	193	195	192	172	118	147	111	90	82	79	112	33	41.8%
Italian	941	872	807	801	792	767	730	689	634	676	598	700	741	748	718	814	756	719	815	737	708	737	679	716	690	775	674	620	552	558	556	496	429	498	533	35	7.0%
Japanese	1,116	1,471	1,878	2,260	2,182	2,045	2,016	1,939	1,918	1,663	1,521	1,468	1,696	1,716	1,695	1,669	1,552	1,804	1,869	1,770	1,629	1,539	1,551	1,531	1,548	1,537	1,595	1,589	1,387	1,510	1,386	1,587	1,380	1,331	1,319	-12	-0.9%
Korean	0	0	0	222	209	265	304	336	402	284	118	122	159	154	147	135	117	108	93	97	108	107	119	115	135	129	197	213	180	225	196	205	227	237	231	-6	-2.5%
Latin	364	250	310	270	235	234	278	230	234	298	187	190	255	260	274	283	280	339	286	273	270	272	272	266	323	278	249	250	153	246	255	224	252	175	220	45	25.7%
Modern Greek	933	880	867	805	634	621	567	518	410	407	358	350	295	274	225	202	219	205	204	180	173	181	165	196	207	217	198	227	209	167	138	178	176	175	173	-2	-1.1%
Spanish	458	467	560	559	524	547	451	474	494	379	347	407	413	459	414	418	452	382	385	425	398	454	393	420	374	336	479	376	479	545	480	417	351	465	523	58	12.5%
Vietnamese	227	315	412	434	373	314	241	217	184	134	126	143	126	104	104	116	125	145	162	181	182	155	138	140	145	125	145	141	175	190	217	155	110	135	218	83	61.5%
Other	474	535	515	678	840	912	890	822	810	717	571	531	522	521	511	514	551	477	509	464	468	491	482	420	400	472	442	380	600	396	393	413	388	406	449	43	10.6%
<b>TOTAL</b>	<b>9,610</b>	<b>9,735</b>	<b>10,160</b>	<b>11,102</b>	<b>10,723</b>	<b>10,291</b>	<b>9,886</b>	<b>9,717</b>	<b>9,374</b>	<b>8,920</b>	<b>7,540</b>	<b>7,741</b>	<b>8,376</b>	<b>8,714</b>	<b>8,429</b>	<b>8,252</b>	<b>7,998</b>	<b>8,203</b>	<b>8,566</b>	<b>8,269</b>	<b>7,760</b>	<b>7,673</b>	<b>7,235</b>	<b>7,269</b>	<b>7,148</b>	<b>7,250</b>	<b>7,381</b>	<b>6,905</b>	<b>6,871</b>	<b>6,878</b>	<b>6,314</b>	<b>6,144</b>	<b>5,514</b>	<b>5,877</b>	<b>6,269</b>	<b>392</b>	
Change (+/-) % yoy		1.3%	4.4%	9.3%	-3.4%	-4.0%	-3.9%	-1.7%	-3.5%	-4.8%	-15.5%	2.7%	8.2%	4.0%	-3.3%	-2.1%	-3.1%	2.6%	4.4%	-3.5%	-6.2%	-1.1%	-5.7%	0.5%	-1.7%	1.4%	1.8%	-6.4%	-0.5%	0.1%	-8.2%	-2.7%	-10.3%	6.6%	6.7%		

NALSAS

NALSSP

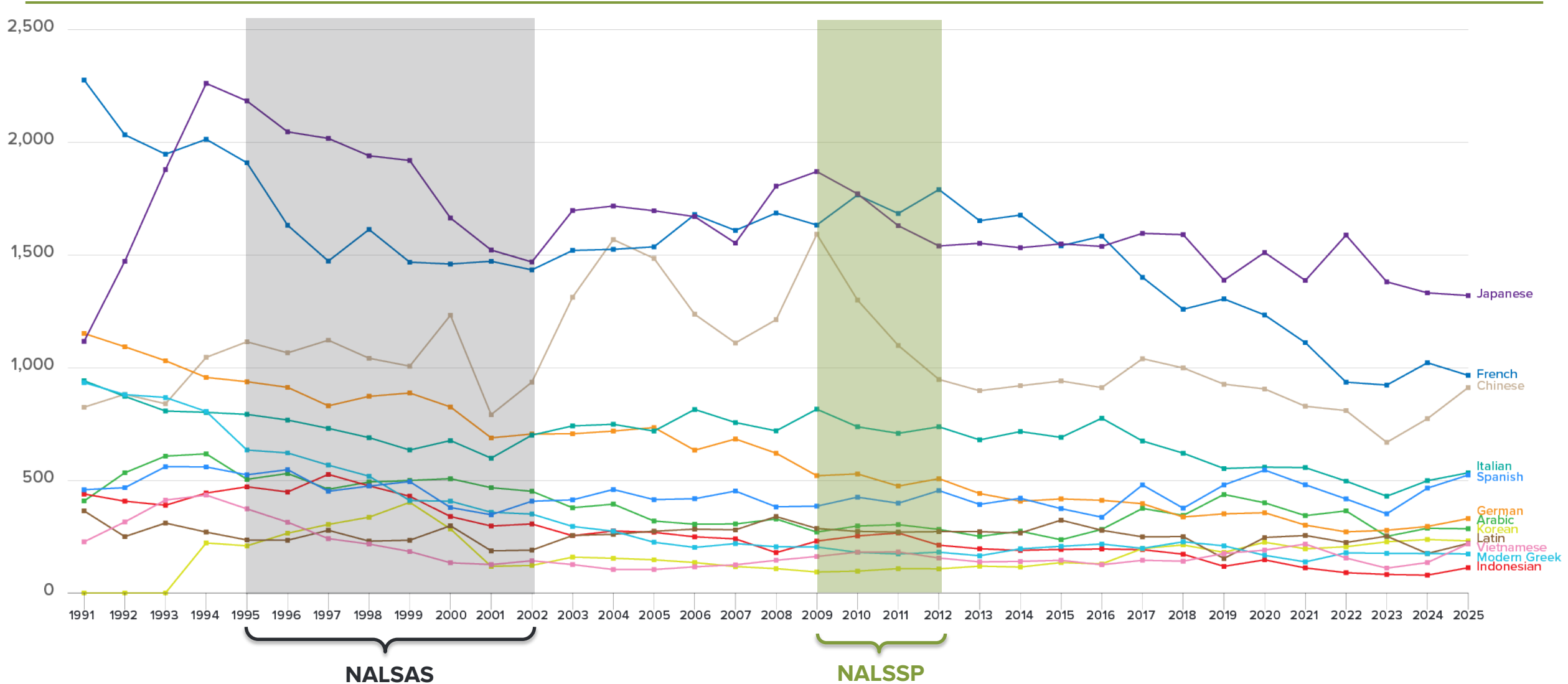
Source: NSW Education Standards Authority: [https://www.boardofstudies.nsw.edu.au/bos\\_stats/student-entries-sex.html](https://www.boardofstudies.nsw.edu.au/bos_stats/student-entries-sex.html)

# Number of HSC enrolments in languages, by language, New South Wales, 1991-2025.



Source: NSW Education Standards Authority: [https://www.boardofstudies.nsw.edu.au/bos\\_stats/student-entries-sex.html](https://www.boardofstudies.nsw.edu.au/bos_stats/student-entries-sex.html)

# Number of HSC enrolments in languages, by language, New South Wales, 1991-2025.



— Arabic — Chinese — French — German — Indonesian — Italian — Japanese — Korean — Latin — Modern Greek — Spanish — Vietnamese

# Number of HSC enrolments in Indonesian, New South Wales, 1991-2025



LANGUAGE	1991	1992	1993	1994	1995	1996	1997	1998	1999	2000	2001	2002	2003	2004	2005	2006	2007	2008	2009	2010	2011	2012	2013	2014	2015	2016	2017	2018	2019	2020	2021	2022	2023	2024	2025	1991-2025 (+/-)	
Indonesian	439	407	389	443	471	448	526	475	429	339	297	306	254	275	269	249	240	179	230	253	266	212	196	189	193	195	192	172	118	147	111	90	82	79	112	-327	-74.5%
Change (+/-) % yoy		-7.3%	-4.4%	13.9%	6.3%	-4.9%	17.4%	-9.7%	-9.7%	-21.0%	-12.4%	3.0%	-17.0%	8.3%	-2.2%	-7.4%	-3.6%	-25.4%	28.5%	10.0%	5.1%	-20.3%	-7.5%	-3.6%	2.1%	1.0%	-1.5%	-10.4%	-31.4%	24.6%	-24.5%	-18.9%	-8.9%	-3.7%	41.8%		

Source: NSW Education Standards Authority: [https://www.boardofstudies.nsw.edu.au/bos\\_stats/student-entries-sex.html](https://www.boardofstudies.nsw.edu.au/bos_stats/student-entries-sex.html)

# Number of HSC enrolments in Indonesian, New South Wales, 1991-2025



LANGUAGE	1991	1992	1993	1994	1995	1996	1997	1998	1999	2000	2001	2002	2003	2004	2005	2006	2007	2008	2009	2010	2011	2012	2013	2014	2015	2016	2017	2018	2019	2020	2021	2022	2023	2024	2025	1991-2025 (+/-)	
Indonesian	439	407	389	443	471	448	526	475	429	339	297	306	254	275	269	249	240	179	230	253	266	212	196	189	193	195	192	172	118	147	111	90	82	79	112	-327	-74.5%
Change (+/-) % yoy		-7.3%	-4.4%	13.9%	6.3%	-4.9%	17.4%	-9.7%	-9.7%	-21.0%	-12.4%	3.0%	-17.0%	8.3%	-2.2%	-7.4%	-3.6%	-25.4%	28.5%	10.0%	5.1%	-20.3%	-7.5%	-3.6%	2.1%	1.0%	-1.5%	-10.4%	-31.4%	24.6%	-24.5%	-18.9%	-8.9%	-3.7%	41.8%		

NALSAS
NALSSP

Source: NSW Education Standards Authority: [https://www.boardofstudies.nsw.edu.au/bos\\_stats/student-entries-sex.html](https://www.boardofstudies.nsw.edu.au/bos_stats/student-entries-sex.html)

# Number of HSC enrolments in Indonesian, New South Wales, 1991-2025.



# Number of HSC enrolments in Indonesian, New South Wales, 1991-2025.





Australian Government



NEW COLOMBO PLAN

Connect to Australia's future - study in the region

# Contact Us.

Email:

[enquiries@acicis.edu.au](mailto:enquiries@acicis.edu.au)

Website:

[www.acicis.edu.au](http://www.acicis.edu.au)



Get **global** with Acicis.