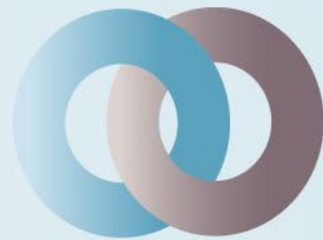


National Languages Campaign

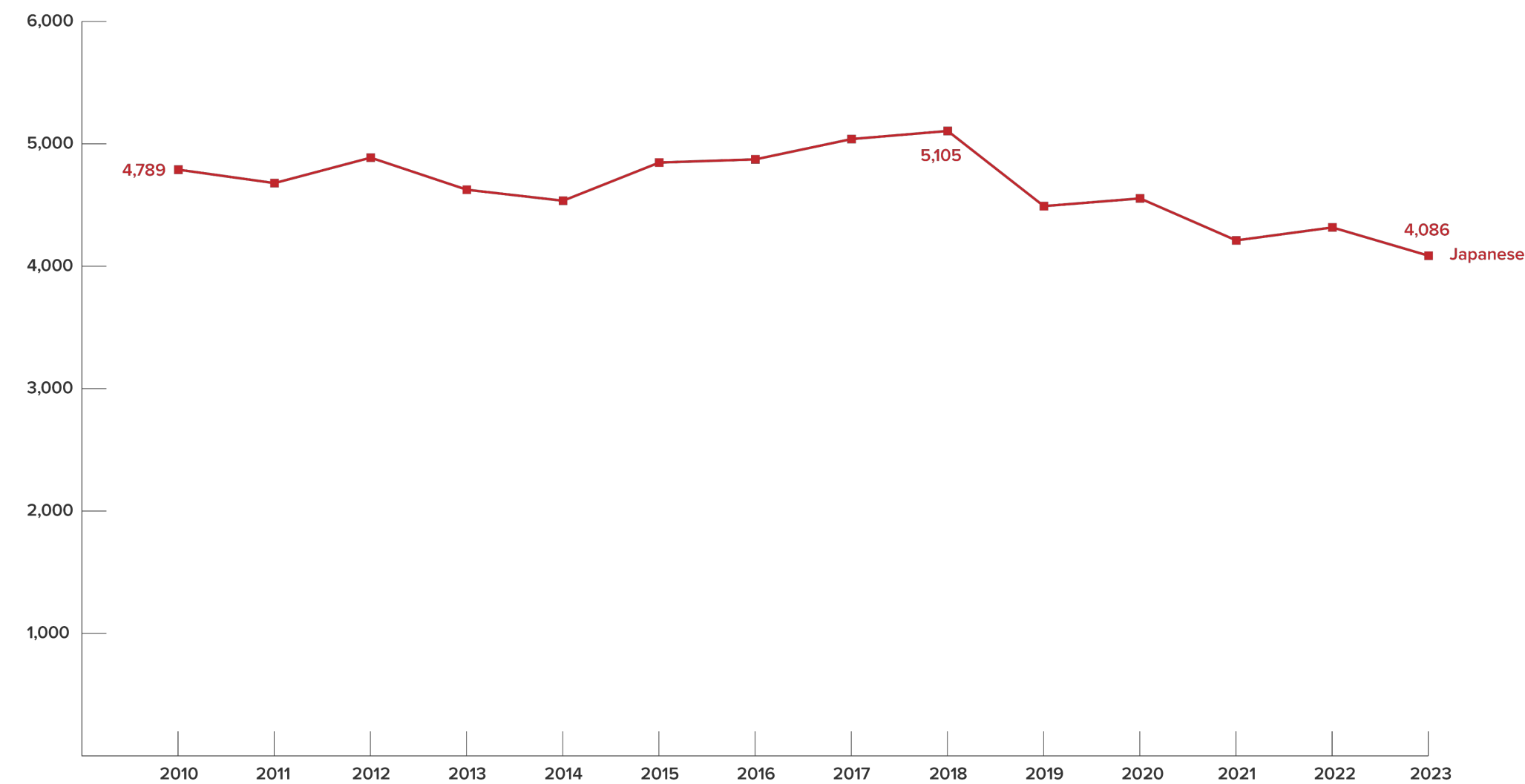


LCNAU

Languages & Cultures

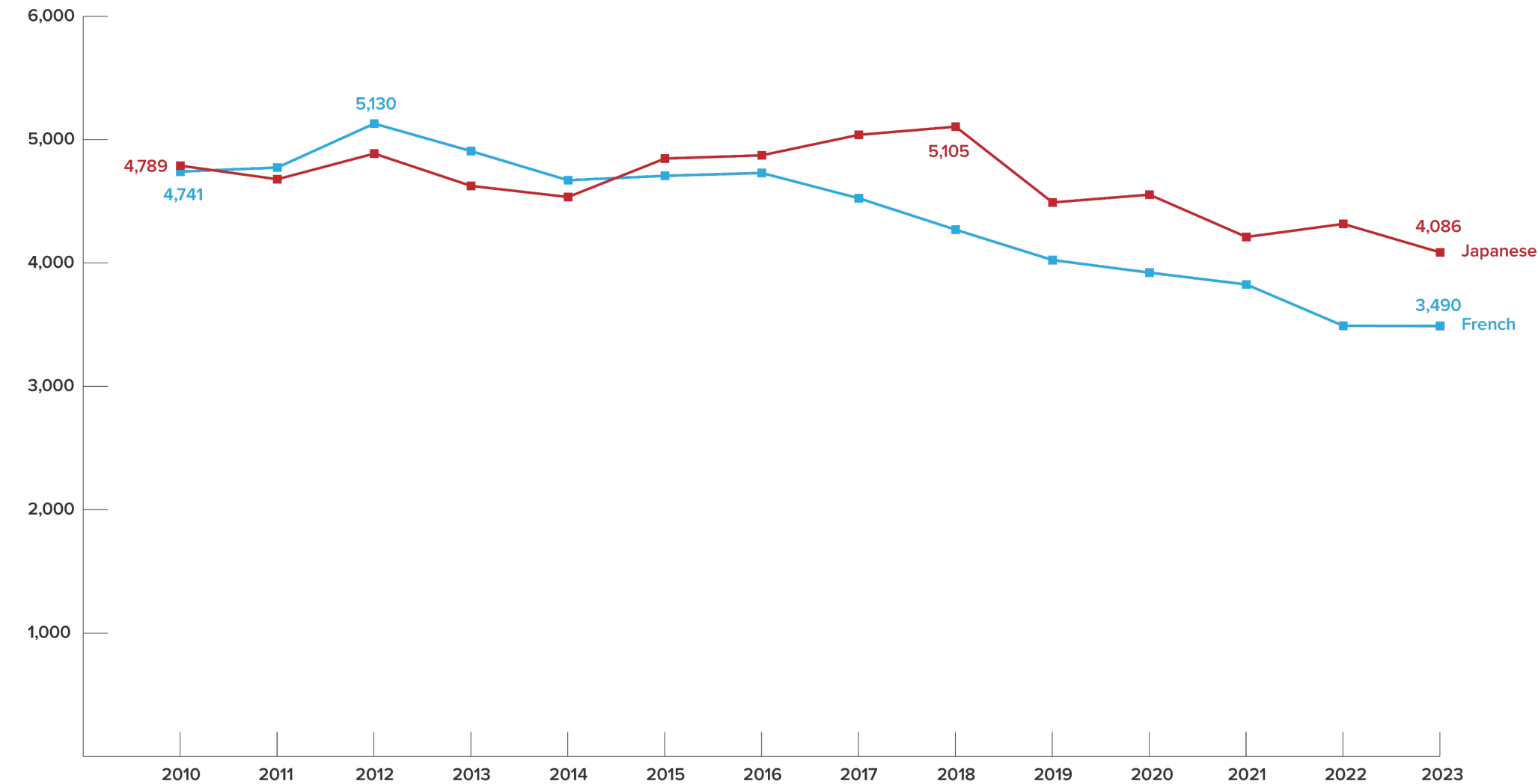
Network for Australian Universities

Year 12 tertiary-recognised language enrolments by language, Australia: 2010-2023



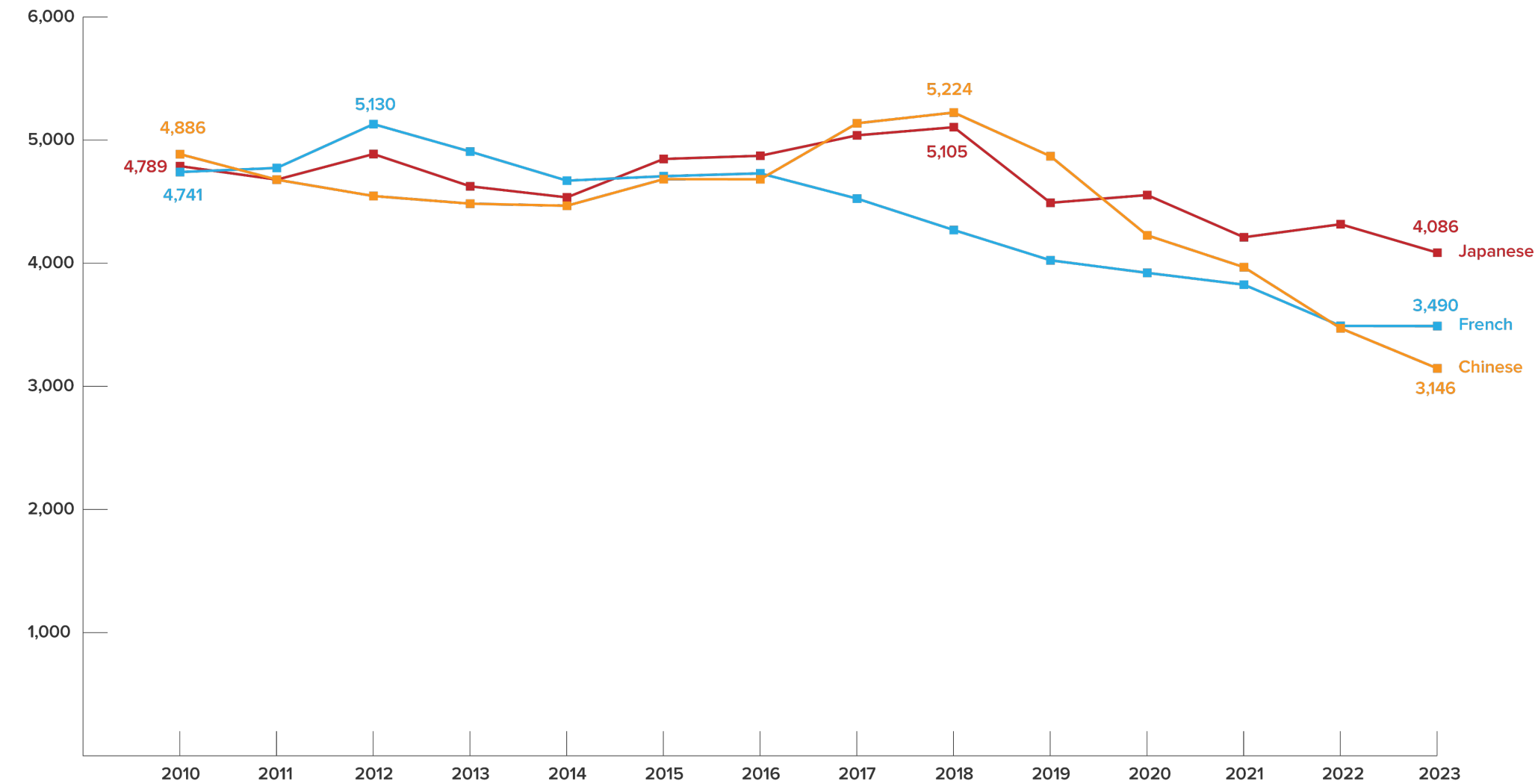
Source: Australian Curriculum, Assessment and Reporting Authority (ACARA)

Year 12 tertiary-recognised language enrolments by language, Australia: 2010-2023



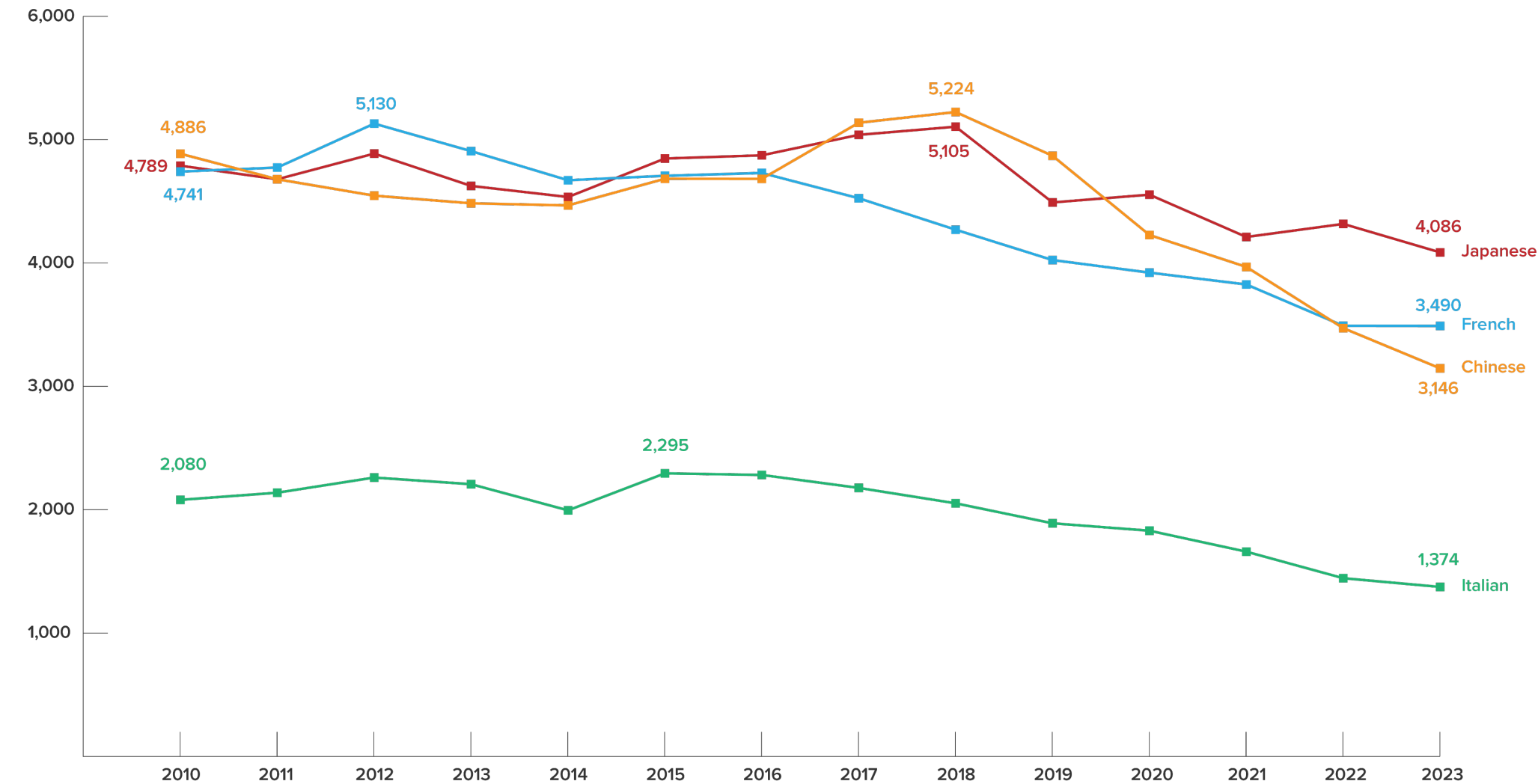
Source: Australian Curriculum, Assessment and Reporting Authority (ACARA)

Year 12 tertiary-recognised language enrolments by language, Australia: 2010-2023



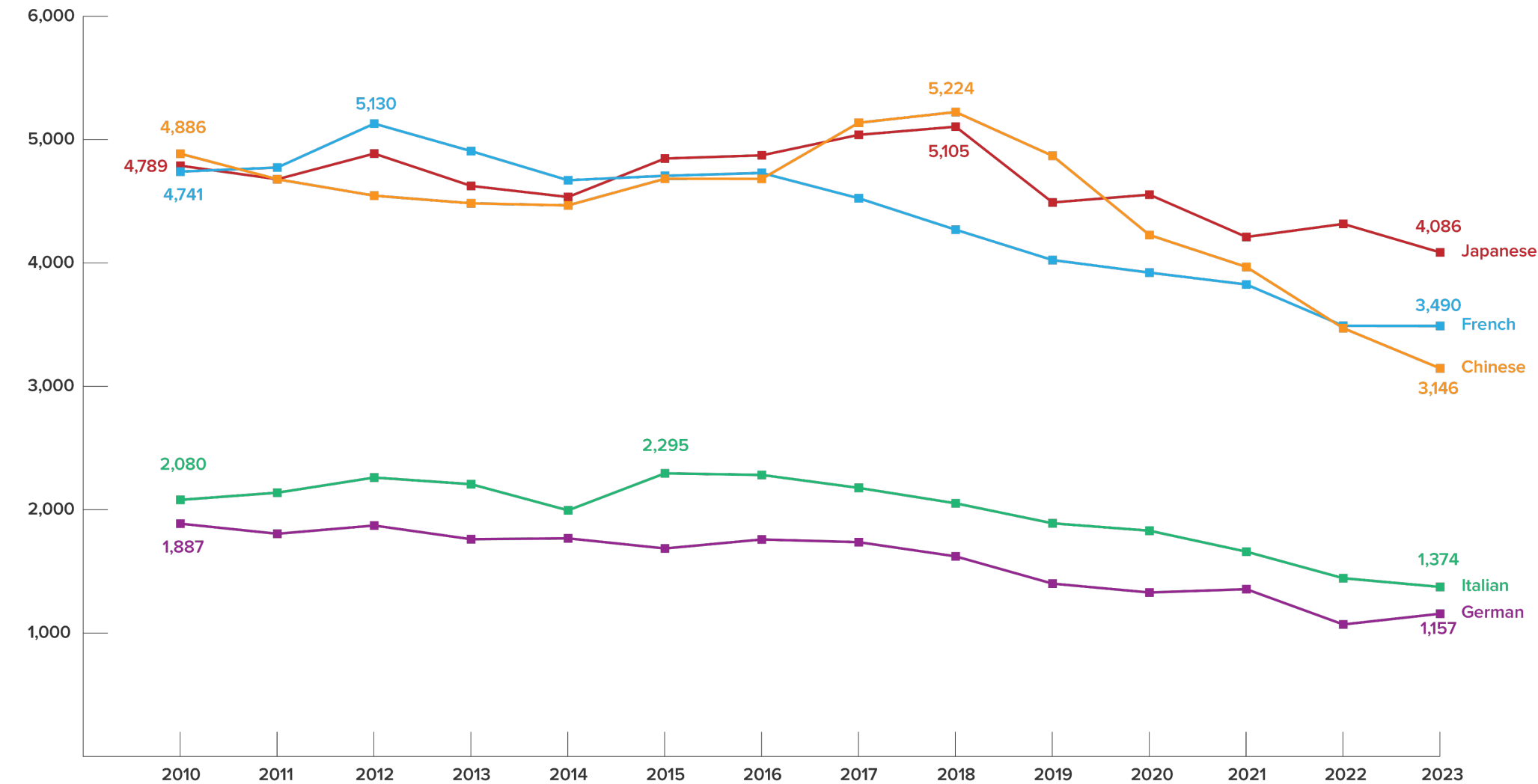
Source: Australian Curriculum, Assessment and Reporting Authority (ACARA)

Year 12 tertiary-recognised language enrolments by language, Australia: 2010-2023



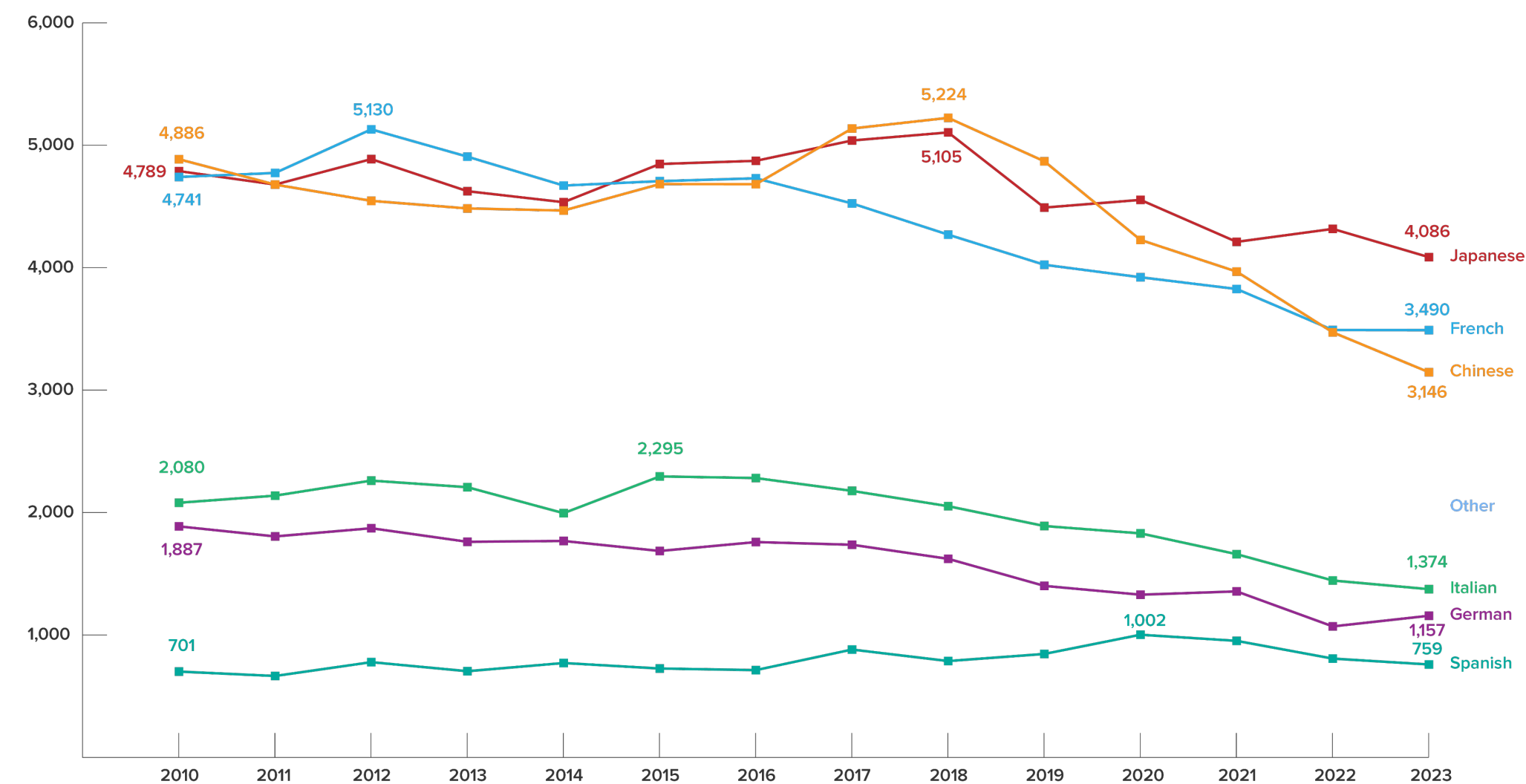
Source: Australian Curriculum, Assessment and Reporting Authority (ACARA)

Year 12 tertiary-recognised language enrolments by language, Australia: 2010-2023



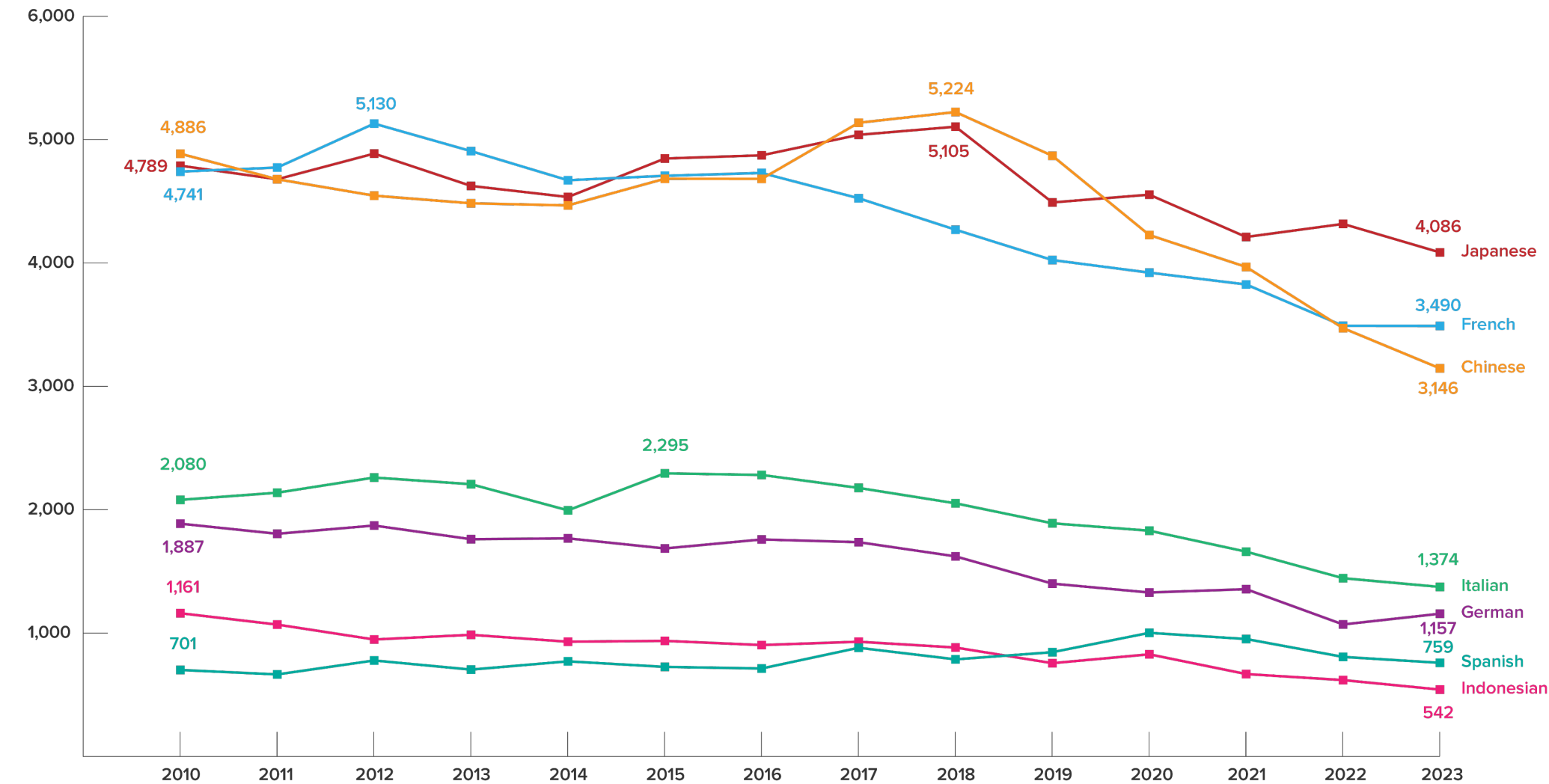
Source: Australian Curriculum, Assessment and Reporting Authority (ACARA)

Year 12 tertiary-recognised language enrolments by language, Australia: 2010-2023



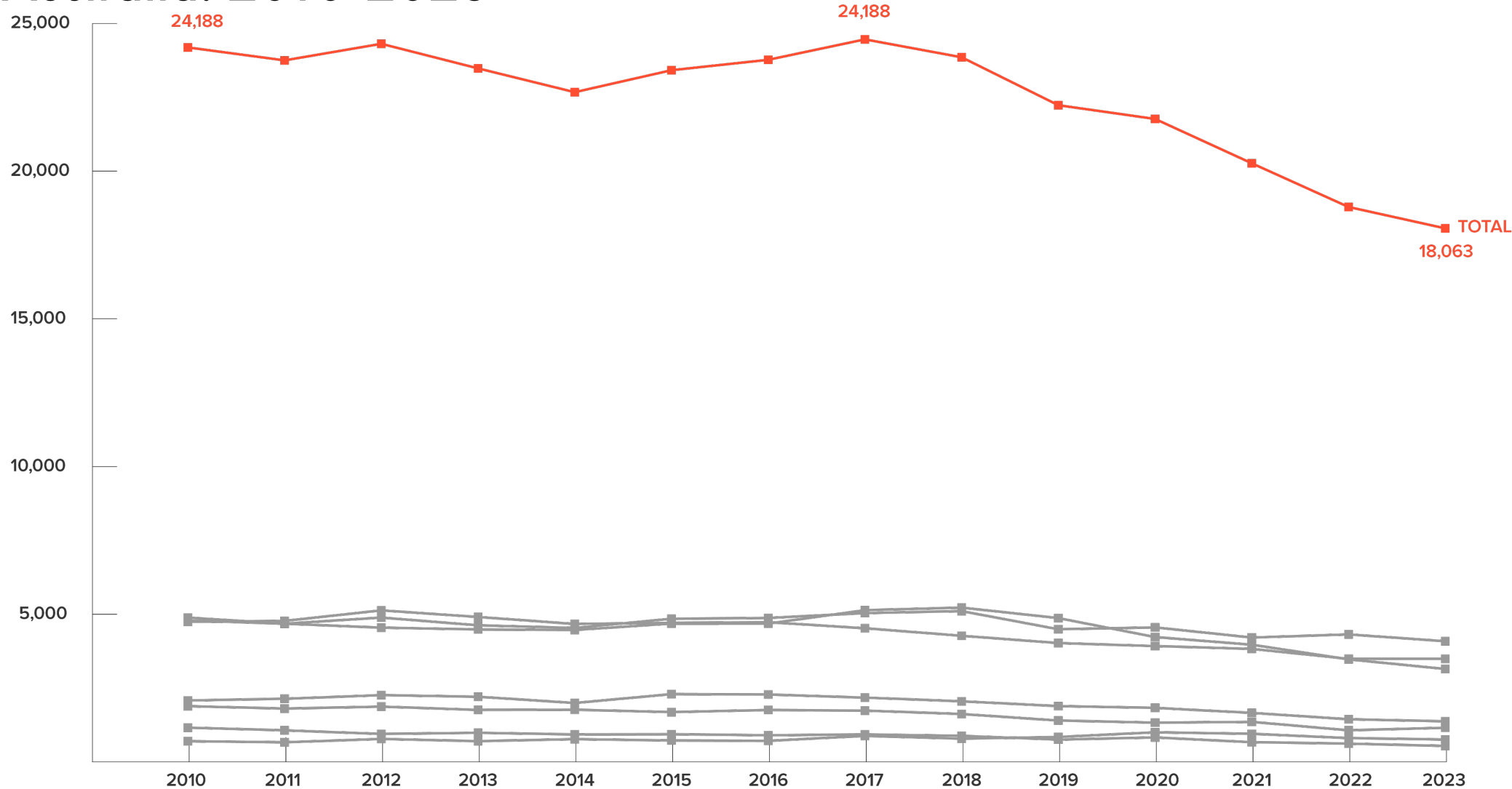
Source: Australian Curriculum, Assessment and Reporting Authority (ACARA)

Year 12 tertiary-recognised language enrolments by language, Australia: 2010-2023



Source: Australian Curriculum, Assessment and Reporting Authority (ACARA)

Year 12 tertiary-recognised language enrolments by language, Australia: 2010-2023



Source: Australian Curriculum, Assessment and Reporting Authority (ACARA)

Year 12 tertiary-recognised language enrolments by language, Australia: 2010-2023

	2010	2011	2012	2013	2014	2015	2016	2017	2018	2019	2020	2021	2022	2023	2022-2023 (+/-)	
Japanese	4,789	4,679	4,887	4,625	4,535	4,847	4,873	5,039	5,105	4,491	4,554	4,211	4,317	4,086	-230	-5.3%
French	4,741	4,774	5,130	4,907	4,671	4,707	4,730	4,525	4,270	4,024	3,922	3,826	3,491	3,490	-1	0.0%
German	1,887	1,805	1,872	1,761	1,768	1,686	1,759	1,737	1,622	1,401	1,329	1,356	1,070	1,157	87	8.2%
Chinese	4,886	4,679	4,546	4,484	4,467	4,683	4,682	5,137	5,224	4,869	4,227	3,968	3,472	3,146	-326	-9.4%
Italian	2,080	2,138	2,261	2,207	1,995	2,295	2,282	2,177	2,052	1,890	1,830	1,660	1,445	1,374	-71	-4.9%
Indonesian	1,161	1,069	948	986	930	937	903	930	883	756	828	668	619	542	-77	-12.4%
Greek	532	475	511	517	544	539	523	538	525	511	436	385	432	434	2	0.5%
Vietnamese	774	831	705	681	612	539	594	685	716	756	828	729	544	524	-20	-3.7%
Spanish	701	665	778	704	771	726	713	881	787	845	1,002	952	807	759	-48	-5.9%
Arabic	411	451	413	399	408	398	475	538	573	645	610	526	544	506	-38	-7.0%
Other	2,225	2,185	2,237	2,231	1,995	2,084	2,258	2,275	2,099	2,045	2,201	1,984	2,046	2,043	-3	-0.1%
TOTAL	24,188	23,750	24,311	23,479	22,673	23,417	23,769	24,461	23,855	22,232	21,767	20,266	18,787	18,063	-724	
Change (+/-) %		-1.8%	2.4%	-3.4%	-3.4%	3.3%	1.5%	2.9%	-2.5%	-6.8%	-2.1%	-6.9%	-7.3%	-3.9%		

Source: Australian Curriculum, Assessment and Reporting Authority (ACARA)

Year 12 tertiary-recognised language enrolments as a percentage of total Year 12 tertiary-recognised enrolments, by language, Australia: 2010-2023

	2010	2011	2012	2013	2014	2015	2016	2017	2018	2019	2020	2021	2022	2023	2010-2023 (+/-)
Japanese	2.23%	2.14%	2.20%	2.06%	2.06%	2.11%	2.10%	2.13%	2.19%	2.08%	1.98%	1.80%	1.88%	1.72%	-22.7%
French	2.21%	2.18%	2.31%	2.19%	2.12%	2.04%	2.03%	1.91%	1.83%	1.86%	1.70%	1.63%	1.52%	1.47%	-33.3%
German	0.88%	0.83%	0.84%	0.79%	0.80%	0.73%	0.76%	0.73%	0.69%	0.65%	0.58%	0.58%	0.46%	0.49%	-44.5%
Chinese	2.28%	2.14%	2.05%	2.00%	2.03%	2.03%	2.01%	2.17%	2.24%	2.25%	1.84%	1.69%	1.51%	1.33%	-41.7%
Italian	0.97%	0.98%	1.02%	0.98%	0.91%	1.00%	0.98%	0.92%	0.88%	0.87%	0.79%	0.71%	0.63%	0.58%	-40.2%
Indonesian	0.54%	0.49%	0.43%	0.44%	0.42%	0.41%	0.39%	0.39%	0.38%	0.35%	0.36%	0.29%	0.27%	0.23%	-57.7%
Greek	0.25%	0.22%	0.23%	0.23%	0.25%	0.23%	0.22%	0.23%	0.22%	0.24%	0.19%	0.16%	0.19%	0.18%	-26.2%
Vietnamese	0.36%	0.38%	0.32%	0.30%	0.28%	0.23%	0.26%	0.29%	0.31%	0.35%	0.36%	0.31%	0.24%	0.22%	-38.7%
Spanish	0.33%	0.30%	0.35%	0.31%	0.35%	0.32%	0.31%	0.37%	0.34%	0.39%	0.44%	0.41%	0.35%	0.32%	-2.0%
Arabic	0.19%	0.21%	0.19%	0.18%	0.19%	0.17%	0.20%	0.23%	0.25%	0.30%	0.26%	0.22%	0.24%	0.21%	11.5%
Other	1.04%	1.00%	1.01%	0.99%	0.91%	0.91%	0.97%	0.96%	0.90%	0.95%	0.96%	0.85%	0.89%	0.86%	-16.9%
TOTAL	11.3%	10.9%	10.9%	10.5%	10.3%	10.2%	10.2%	10.3%	10.2%	10.3%	9.5%	8.6%	8.2%	7.6%	-32.4%
Change (+/-) %		-3.6%	0.6%	-4.2%	-1.6%	-1.2%	0.5%	1.0%	-1.2%	0.8%	-8.2%	-8.5%	-5.6%	-6.6%	

Source: Australian Curriculum, Assessment and Reporting Authority (ACARA)